

Amcan

Since 1983



AMCAN CLIPDECK66



Dedicated to quality excellence

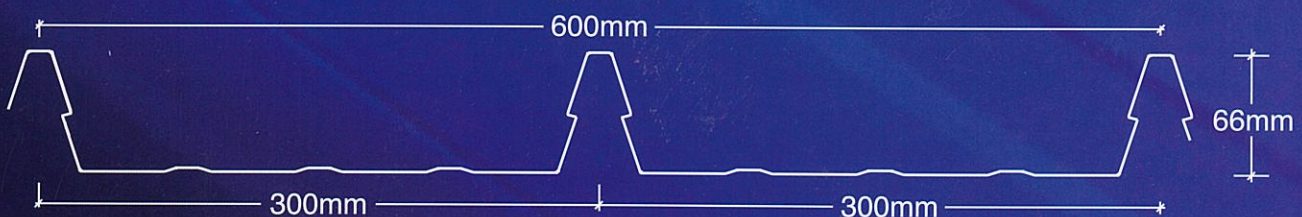
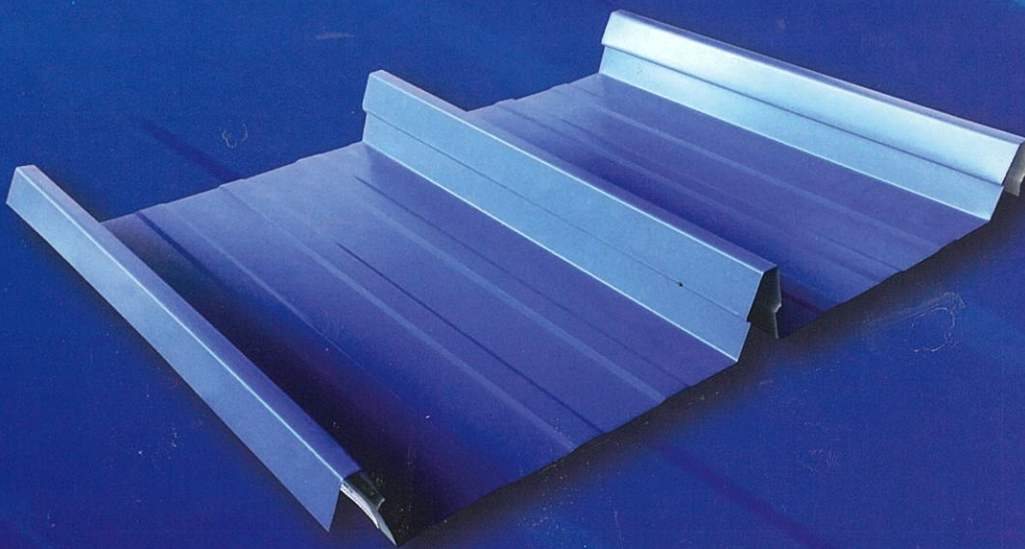
CLIPDECK66™

High-Ribs Concealed Clip-Locking System

AMCAN CLIPDECK66 is the latest addition to our existing range of concealed fastening systems that caters to today's adverse weather conditions. Clipdeck66 has the advantage of a 66mm clip-fixing system which is specially designed for low-pitch, long span roofing.

Designed with a neat and smooth look coupled with AMCAN's Mobile Job-Site Rollforming concept, Clipdeck66 can be rollformed on-site to the required length without any end-lapping upon request.

It is perfect for mega buildings like commercial complexes, large institutions and international airports.



MATERIAL SPECIFICATION

AMCAN CLIPDECK66 is made from premium (GL) **55% Al-Zn** Alloy Coated Steel. Material Steel Grade is G550 (550 MPa minimum yield stress).

PROFILE PROPERTIES

	Total Coated Thickness (mm)	Effective Width (mm)	Rib Height (mm)	Steel Grade (MPa)	Minimum Roof Pitch (°)
Standard	0.48	600	66	G550	1
Non-standard	0.54	600	66	G550	1

TOLERANCE: Length ± 10 mm, Cover Width ± 4 mm, Thickness ± 0.02 mm

MAXIMUM PURLINS SUPPORT (CENTER TO CENTER)

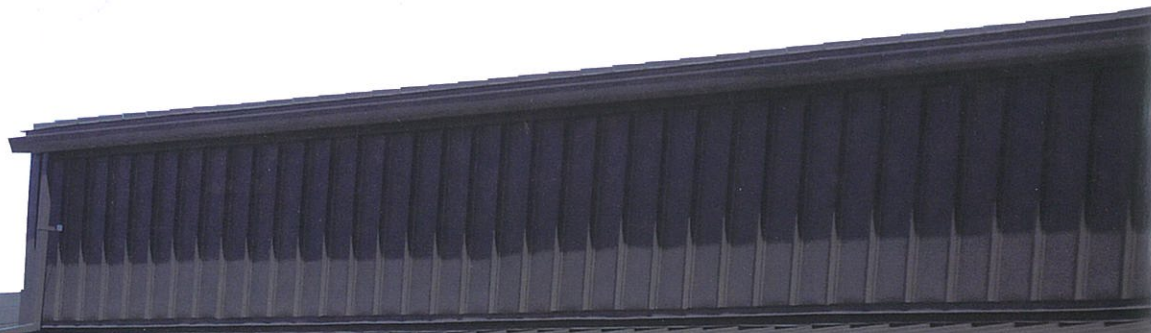
Total Coated Thickness (mm)	Support Type For Roof	Single Span (mm)	Internal Span (mm)	End Span (mm)
	0.48		1200	1500
0.54		1800	2400	2000

MAXIMUM ALLOWABLE ROOF LENGTH (m)

Roof Slope (°)	Rainfall intensity (mm/hr)					
	150	180	200	250	300	350
1	510	425	385	310	255	220
3	575	480	430	346	288	245
5	700	595	535	428	355	305
7	893	748	670	530	448	380
10	950	808	728	580	480	410

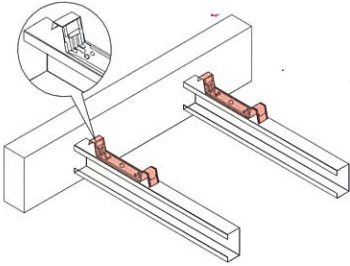
SPRUNG CURVING

As AMCAN CLIPDECK66 uses high tensile steel (G550-550MPa), minimum radius for sprung curving is recommended to be 60m.



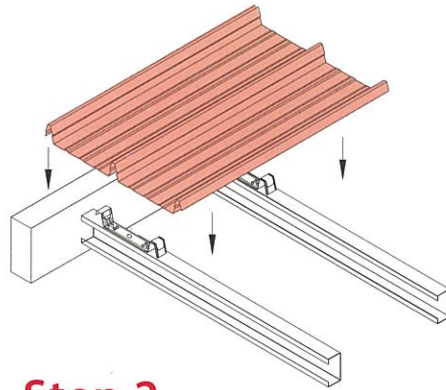
CLIPDECK66 ROOF SYSTEM

- Installation Methods



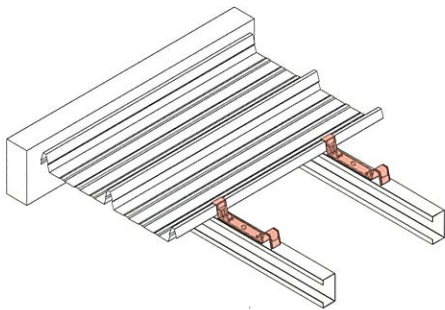
Step 1

Position the first clip and fasten to a support. Align and fasten the remaining clips to each support using a string line. Make sure that the clips are positioned and aligned according to the diagram above.



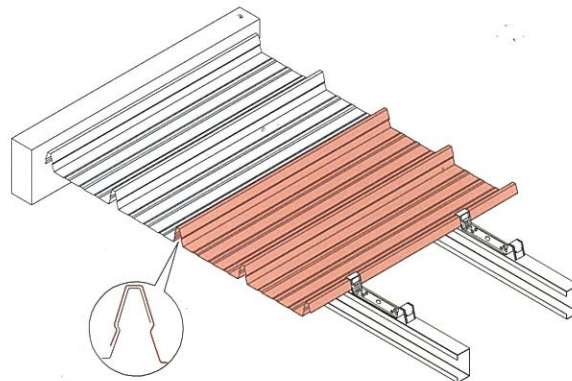
Step 2

Position the first sheet longitudinally in relation to the shutter overhang and locate it over the fastened run of clips. Place the center rib first, and engage the center end female rib onto all the clips by foot pressure.



Step 3

Position and fasten the next run of clips to each support as per diagram shown.



Step 4

Place the second sheet over the second run of clips, again positioning the center rib first. A string line stretched across the bottom alignment of the sheets can be used to check that the end of the sheets are in line.



Job-Site Rollforming Concept

Extra long roofing sheets can now be rolled on-site to the required length without any end-lapping.

As an added benefit, our rollforming machines are containerized and are therefore very convenient for relocation to different areas of any job-site. This eliminates double-handling and makes it easier to move them over long distances.



Amcan



AMCAN GROUP

Corporate Office · Factory

Lot 779, Block 7, Jalan Demak Laut 3
MTLD Sejingkat Industrial Park
93050 Kuching, Sarawak Malaysia

Tel +6082 432 323

Fax +6082 432 828

Email : amcancolor@gmail.com

Website : www.amcancolor.com

Amcan

Sabah Factory Office

Lot 2, Jalan Limau Manis, Off Jalan Lintas, Off mile 5, Jalan Tuaran, 88450 Kota Kinabalu, Sabah, Malaysia.

Tel : +6088 428484

Fax : +6088 424661

Johor Bahru Factory Office

Lot Plo, Jalan Firma 3, Tenrau Industrial Estate IV, 81100 Johor Bahru, Johor, Malaysia.

Tel : +607 3552416

Fax : +607 3552426

Kuala Lumpur Office

4-2-4, Jalan Bayam, Queen's Avenue, 55100 Kuala Lumpur, Malaysia.

Tel : +603 92055330

Fax : +603 92055320

Singapore Office

152H, East Cost Road, Singapore

Tel : +65 63482486

Fax : +65 63482487